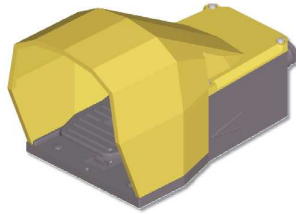




İMAJ TEKNİK
ELEKTRİK ELEKTRONİK MALZ. SAN. VE TİC. LTD. ŞTİ

İMAJTEKNİK

6100



İMAJ
D
ŞTİ

■ The footswitch 6100 is a control device for all industrial machine tool. It operates as an auxiliary controller of electrical motors through a power interface, such as a contactor.

■ The footswitches 6100 are made of plastic material or die-cast aluminium, and they either have a standard cover or a large cover for safety-shoes. Materials and components are wear and shock-resistant.

■ Double footswitches are available; they are fixed on a metal plate and can be supplied with emergency stop mushroom pushbutton. A special footswitch 6100 for pneumatic valves with a fixing plate is also available.

■ The "lock-release" device used for keeping the pedal in the on position and the safety device preventing the accidental use of the pedal can be fitted on request.

■ Each unit can have one to four 1NO+1NC snap action switches. All NC contacts are of the positive opening type.



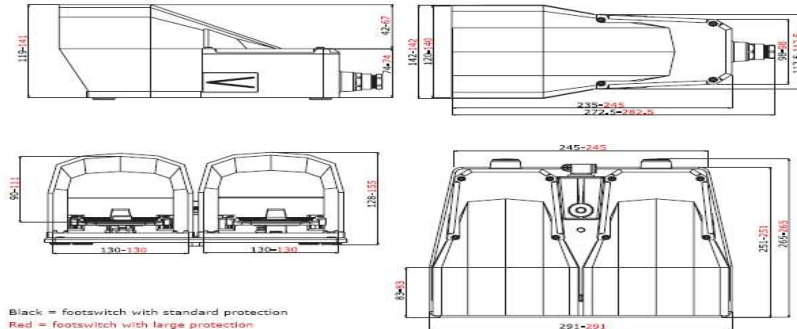
TECHNICAL SPECIFICATIONS

Conformity to Community Directives	2006/95/CE
Conformity to Standards	EN 60947-1 EN 947-5-1 EN 60529 EN 50204-1
Ambient temperature	Storage -40°C/+70°C Operational -25°C/+70°C
Protection degree	IP 53
Insulation category	Class I
Cable entry	Cable clamp M20
Markings	CE

TECHNICAL SPECIFICATIONS OF THE SWITCHES

Utilisation category	AC 15
Rated operational current	3 A
Rated operational voltage	250 V
Rated thermal current	10 A
Rated insulation voltage	300 V~
Mechanical life	1 × 10 ⁶ operations
Terminal referencing	According to EN 50013
Short-circuit protection	10 A cartridge fuses
Connections	Screw-type terminals with pads
Wires	1×2.5 mm ² , 2×1.5 mm ² (UL = (c)UL: use 60 or 75 °C copper (CU) conductor and wire size No. 16-18 AWG)
Tightening torque	0.8 Nm
Markings	CE, UL, (c)UL

OVERALL DIMENSIONS



Black = footswitch with standard protection
Red = footswitch with large protection

The dimensions shown in this document are for reference only. For detailed information, please refer to the technical drawing.

6100 FOOTSWITCH

STANDARD FOOTSWITCH CODES

Code	Footswitch type			Material		Protection		Switches	
	Simple	Double	For valves	Plastic	Aluminium	Standard	Large	Q.ty	Contacts
PF04612100	x			x			x	1	1NO+1NC
PF04612200	x			x			x	2	2x1NO+1NC
PF04612300	x			x			x	3	3x1NO+1NC
PF04613000	x			x			x	0	
PF04613100		x		x			x	2	2x1NO+1NC
PF04613200		x		x			x	4	4x1NO+1NC
PF04614000		x		x			x	0	
PF04615100	x				x	x		1	1NO+1NC
PF04615200	x				x	x		2	2x1NO+1NC
PF04615300	x				x	x		3	3x1NO+1NC
PF04616000	x				x	x		0	
PF04616100		x			x	x		2	2x1NO+1NC
PF04616200		x			x	x		4	4x1NO+1NC
PF04617000		x			x	x		0	
PF04617100	x				x		x	1	1NO+1NC
PF04617200	x				x		x	2	2x1NO+1NC
PF04617300	x				x		x	3	3x1NO+1NC
PF04618000	x				x		x	0	
PF04618100		x			x		x	2	2x1NO+1NC
PF04618200		x			x		x	4	4x1NO+1NC
PF04619000		x			x		x	0	
PF04814100	x		x	x		x			without valves
PF04814600	x		x	x			x		without valves

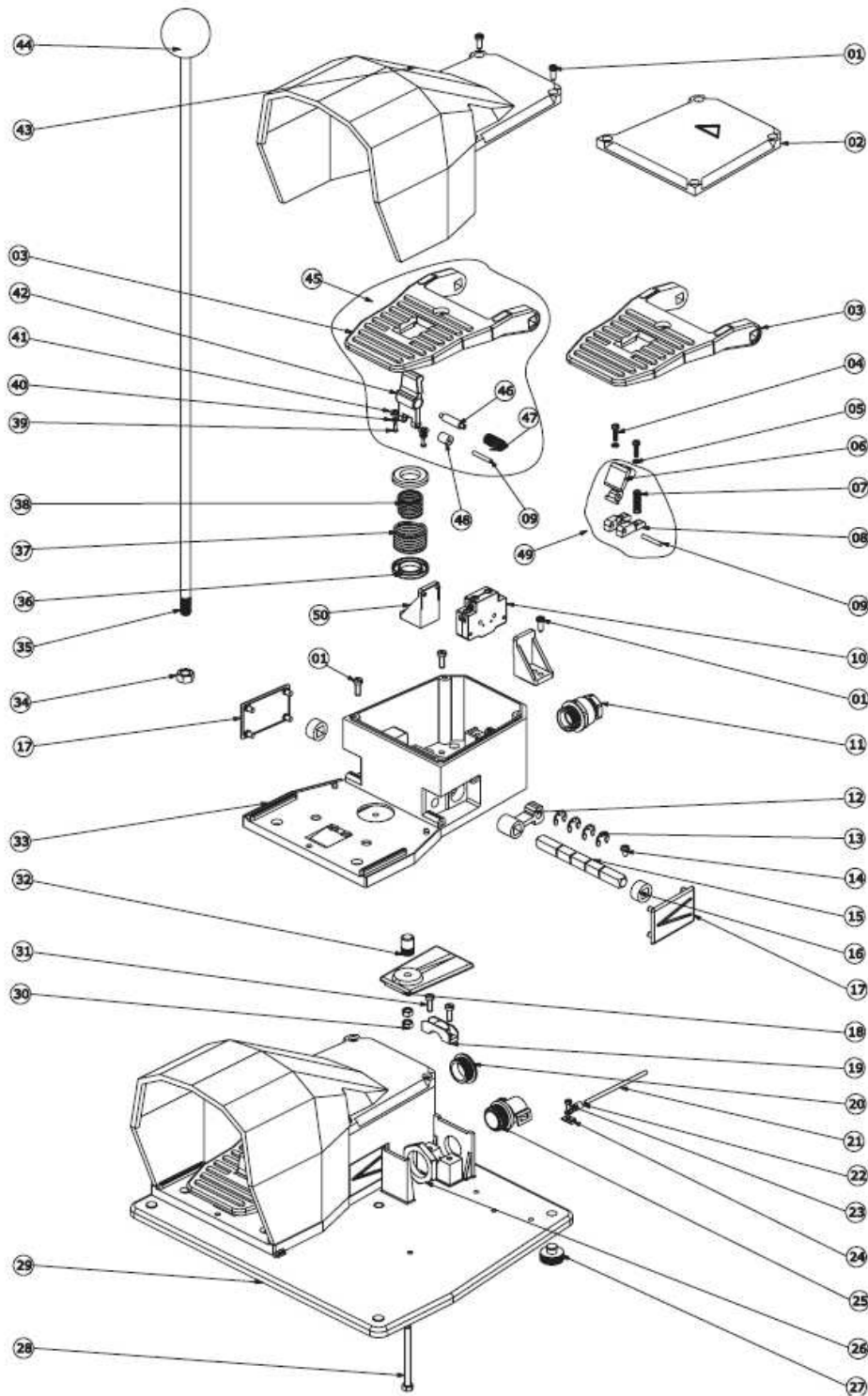
6100 FOOTSWITCH

IMAJTEI

6100 FOOTSWITCH



DETAILED DRAWING



The sizes and the products illustrated in this brochure may be modified without notice. Under no circumstances can their description have a contractual value.

TER TECNO ELETTRICA RAVASI S.R.L. - VIA GARIBOLDI 29/31 - 23885 CALCO (LC) - ITALY
 TEL. +39 039 9911011 - FAX +39 039 9910445 - E-MAIL: info@terinternational.net - www.terinternational.net
 REGISTERED OFFICE - GOODS RECEPTION: VIA SAN VIGILIO 2 - 23887 OLGIATE MOLGORA (LC) - ITALY

PRCA0EAK02-1

COMPONENTS

REFERENCE	CODE	DESCRIPTION
01	PRVI0106PE	Screw 4x10
02	PRSL5503PI	Small red cover
03	PRSL7500PI	Pedal
04	PRVI0070PE	Screw M3x12
05	PRRN0018PE	Toothed washer
06	PRSL7545PI	"Lock-release" lever
07	PRMO2123PE	Spring
08	PRSL9410PI	Support for "lock-release" lever
09	PRTR1001PE	Pin 3x20
10	PRSL0036XX	Snap action 1NO+1NC switch
11	PRPS0064PE	Cable clamp M20
12	PRSL7555PI	Lever
13	PRRN1093PE	Elastic ring
14	PRVI0085PE	Screw for wire clamp
15	PRTO0131PE	Shaft
16	PRSL8532PI	Spacer 8.5 mm
17	PRSL5610PI	Lateral cover
18	PRSL5615PI	Cover for double base
19	PRSL9030PI	Cable clamp
20	PRPS0070PE	Threaded plug M20
21	PRVV9001PE	Yellow-green cable
22	PRCN8001PE	Cable terminal
23	PRVI0065PE	Screw M3x6
24	PRTR0015PE	Cable clamp hole 3,7
25	PRPS1056PE	Joint PG 16
26	PRDA1005PE	Nut
27	PRGO0051PE	Foot
28	PRVI0231PE	Screw M5x55
29	PRFU3081PE	Double base
30	PRDA0037PE	Nut
31	PRVI0182PE	Screw M4x12
32	PRTO6266PE	Knob
33	PRFU3011PE	Large aluminium base
	PRFU3031PE	Standard aluminium base
	PRSL6000PI	Standard plastic base (pneumatic footswitch)
	PRSL6005PI	Large plastic base (pneumatic footswitch)
	PRSL6030PI	Standard plastic base
	PRSL6035PI	Large plastic base
34	PRDA0047PE	Nut
35	PRTO0156PE	Rod
36	PRSL9725PI	Spring guide
37	PRMO1032PE	Spring
38	PRMO1033PE	Spring
39	PRVI0005PE	Screw 2,2x6,4
40	PRRN0011PE	Washer
41	PRRN0056PE	Washer
42	PRSL7540PI	Safety lever
43	PRFU3061PE	Standard aluminium protection
	PRFU3071PE	Large aluminium protection
	PRSL5500PI	Standard plastic protection
	PRSL5501PI	Large plastic protection
44	PRTI6001PE	Knob
45	PRSL1730UL	Pedal with "lock-release" device
46	PRTO0695PE	Safety lever pin
47	PRMO1071PE	Spring
48	PRSL7065PE	Pawl
49	PRSL1743XX	"Lock-release" device
50	PRSL9085PI	Bracket

6100 FOOTSWITCH



adresimiz
değişti

Emekyemez Mah. Yüksek Minare Sk. No:8 / 17
80020 Karaköy / İstanbul

Tel:212/2359535
Fax:212/2359537